

LATC Market Insight

North Somerset Council



Overview of Market Insight

A review carried out on the Local Authority Trading Company (LATC) landscape in 2024, has found that no central register of Public Sector Shared Services exist, and Companies House records don't currently provide the ability for a search on LATC specific registrations.

The latest report detailing Local Authority shared services landscape was carried out by the Local Government Association (LGA) in 2019 when it published its comprehensive Share Services Map for each region in England covering Local Authorities, Blue Light and Trusts, across all services.

<https://www.local.gov.uk/our-support/efficiency-and-productivity/shared-services/shared-services-map>

The majority of active operational shared services listed within this report were created between 2010 and 2016 which aligns with the Governments agenda for the sharing of knowledge and resources across all public sector.

The data collected by LGA was carried out by request to each local authority and has produced a comprehensive list which provides us with a good insight into the services provided, the legal models in which they are delivered, and the partners involved.

We have reviewed and validated the focused list of LATC's through Companies House records to ensure that the shared services are active and operational in 2023

Please note that this market insight is focused on English Shared Services, due to the limited marketplace information of services available within Scotland and Wales and the alignment of those entities to Scottish and Welsh Government strategies.

LATC Legal Delivery Models

The Local Authority Trading Company (LGA) model can be delivered via the following legal entity methods, which then allows for an equal shareholder control of the shared service company and provides the ability to trade in the wider commercial market with a view to generating a profit for the shareholders (rather than just on a broad cost recovery basis).

- 1. Company limited by shares**
- 2. Company limited by guarantee**
- 3. Industrial and provident society**

LGA's report identifies those shared services organisations that have this legal model, with both 1. Company limited by shares and 2. Company limited by guarantee listed.

Source: <https://www.unison.org.uk/content/uploads/2013/06/On-line-Catalogue212753.pdf>

LGA ICT Shared Service Findings

The LGA 2019 market analysis identified the following details:



626 Total Shared Services



32 Of which provide a form of ICT & Digital Shared Services



19 of those Services provided ICT support



1 Only Shared Service has been created a 'Company Limited by Shares' in the form of an LATC

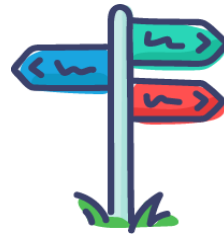
Local Government Association Findings

The LGA report also identifies those organisations whose legal model for the delivery of services is via a 'company limited by shares' or 'company limited by guarantee' which provides the vehicle for LATC status and who are verified as operationally active in 2023.



7

Shared Services Operational have been created using the Company Limited by Shares legal model



5

Shared Services Operational have been created using the Company Limited by Guarantee legal model



Only 1

Is listed under the category of ICT & Digital Services



3

Is listed under the category of Back Office and Customer Services

LGA Market Insight 2019

2023 Active Shared Service Legal Vehicles applicable for LATC Service Models

Shared Service Arrangement	Organisation	Shared service category	Operational from which year?	Which legal vehicle is it being delivered through?	Region
2020 Vision / Publica Shared Services Partnership	Cotswold District Council	Back Office Services and Customer Services	2017	Company limited by guarantee	South West
Delt Shared Services Ltd	Plymouth City Council	ICT & Digital Services	2014	Company limited by shares	South West
Emergency Service Fleet Management (Humberside) Ltd	Humberside Fire and Rescue	Property, Facilities and Utilities	2015	Company limited by guarantee	Yorks & Humber
Fire and Rescue Indemnity Company (FRIC)	Essex Fire and Rescue	Community Safety (including Fire)	2015	Company limited by guarantee	East of England
Growth Lancashire	Growth Lancashire	Business Support, Employment, Economic Growth & Regeneration	2004	Company limited by guarantee	North West
Joint Working Agreement between Lancashire County Council and Blackpool Council	Lancashire County Council	Environmental Protection, Waste & Regulatory Services	2007	Company limited by shares	North West
North West Fire Control	Cheshire Fire Authority	Community Safety (including Fire)	2014	Company limited by shares	North West
Public Sector Partnership Services Limited (PSPS)	East Lindsey District Council & South Holland District Council	Back Office Services and Customer Services	2010	Company limited by shares	East Midlands
Unity Partnership Limited	Oldham Metropolitan Borough Council	Back Office Services and Customer Services	2011	Company limited by shares	North West
Vertiau North Yorkshire	Richmondshire District Council	Democracy, Governance & Performance	2011	Company limited by shares	Yorks & Humber
Waste Disposal – incineration with electricity and heat recovery	Coventry City Council	Environmental Protection, Waste & Regulatory Services	1994	Company limited by shares	West Midlands
Worcestershire JPV	Worcestershire County Council	One Public Estate	2015	Company limited by guarantee	West Midlands

